



# NEWSLETTER



2<sup>nd</sup> November 2007

## WELCOME BACK

Welcome back to the second half of the autumn term. On the reverse of this Newsletter, you will find the latest **holiday dates**. It seems that some of you did not receive the updated list which is why I am sending it out again. Please pay particular attention to the Easter weekend dates and the Easter holiday itself.

We are working very hard to make the necessary improvements ahead of our Ofsted Inspection in March. Croydon's School Improvement Team came in for an Inspection just before half-term and were very pleased with the progress we are making. By the end of this month, we will have a 1-day monitoring visit by HMI (Her Majesty's Inspectorate) who monitor schools in our position on behalf of Ofsted. As soon as I receive feedback on this, I will of course inform you officially of our progress.

## ASSISTANT HEADTEACHERS

Miss Haggis and Miss Peckham have been appointed as Assistant Headteachers within the school. This further strengthens our Senior Leadership Team in terms of moving the school forwards.



## LOBSTER LIBRARY

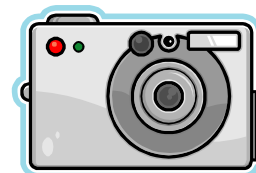
Just to remind you that the Lobster Library is open after school from Monday to Thursday for you to go in and share a book with your child/children. This is an excellent resource and I do urge you to pop in whenever you can. ***Please note that the books cannot be taken away, they are for sharing in the Lobster Library only.***

## MATHS WORKSHOPS

If you have a child in Year 1, Year 2, Year 5 or Year 6, you should have received information earlier this week about a Maths Workshop run by CALAT who organise family learning activities. The Workshop for Years 1 & 2 is on Thursday 15<sup>th</sup> November 9.15-11.15am and for Year 5 & 6 on Thursday 29<sup>th</sup> November 9.15-11.15am. Please do sign up for these workshops – they will be fun and will really help you to support your child in maths.

## SCHOOL PHOTOS

A reminder that the money for school photos should be back by Tuesday 13<sup>th</sup> November. This is the deadline. Any orders/money received after this date will not be able to be processed.



## BIRCHANGER ROAD GATE

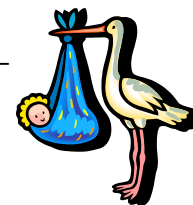
Please note that this gate is now locked at the same times as the other gates. Entrance to the school between 9.30am and 3.00pm is through the main entrance in Crowther Road only.

## LEARNING LINKS

Please note that the Thursday after-school Learning Links Club will start again from next Thursday 8<sup>th</sup> November. Two teachers will be at each session to support both you and your child with either homework or any general support that you would like.

## NEW ARRIVAL

I am delighted to tell you that Ms Banfield gave birth to a baby girl recently – both mother and baby are doing very well.



## KEY DATES FOR THIS HALF-TERM:

### November:

Tuesday 13<sup>th</sup> SNAPS Jewellery Evening – 7pm  
Monday 19<sup>th</sup> Friendship Week begins  
Fri 30<sup>th</sup> SNAPS Mufti Day: Children wear the colours of Christmas (red, green etc..)

### December:

Sunday 16<sup>th</sup> Christmas Fair 11am-2pm  
Tuesday 18<sup>th</sup> Junior Christmas Performance (all classes) 9.30am  
Infant Christmas Performance (all classes) 2.30pm  
Wed 19<sup>th</sup> Infant Christmas Performance (all classes) 9.30am  
Junior Christmas Performance (all classes) 2.30pm  
Thurs 20<sup>th</sup> Class Christmas Parties (pm)  
Fri 21<sup>st</sup> Break up for Christmas Holiday

### January 2008:

Mon 7<sup>th</sup> INSET Day  
Tues 8<sup>th</sup> Children back to school

## SOUTH NORWOOD PRIMARY SCHOOL 2007/2008 HOLIDAY DATES

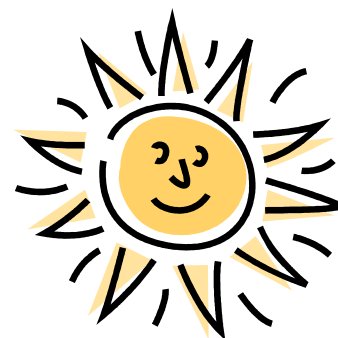
### SPRING TERM 2008

*INSET Day: Monday 7<sup>th</sup> January 2008*  
School Opens Tuesday 8<sup>th</sup> January 2008  
School Closes Friday 15<sup>th</sup> February 2008  
***Spring Half-term: Monday 18<sup>th</sup> – Friday 22<sup>nd</sup> February 2008***  
***INSET Day: Monday 25<sup>th</sup> February 2008***  
School Opens Tuesday 26<sup>th</sup> February 2008  
School Closes Friday 4<sup>th</sup> April 2008



### SUMMER TERM 2008

School Opens Monday 21<sup>st</sup> April 2008  
School Closes Friday 23<sup>rd</sup> May 2008  
***Summer Half-Term: Monday 26<sup>th</sup> – Friday 30<sup>th</sup> May 2008***  
School Opens Monday 2<sup>nd</sup> June 2008  
School Closes Friday 18<sup>th</sup> July 2008  
***INSET Day: Monday 21<sup>st</sup> July 2008***  
***INSET Day: Tuesday 22<sup>nd</sup> July 2008***



### ADDITIONAL HOLIDAYS

Good Friday 21<sup>st</sup> March 2008  
Easter Monday 24<sup>th</sup> March 2008  
Mayday Bank Holiday Monday 5<sup>th</sup> May 2008

### (INSET) TEACHER TRAINING DAYS

Monday 3<sup>rd</sup> September 2007  
Monday 7<sup>th</sup> January 2008  
Monday 25<sup>th</sup> February 2008  
Monday 21<sup>st</sup> July 2008  
Tuesday 22<sup>nd</sup> July 2008

Please note that Good Friday and Easter Monday are not within our Easter School Holiday next year. We break up on Friday 4<sup>th</sup> April for a 2-week Easter Holiday and return on Monday 21<sup>st</sup> April.

